

CORDLESS KEBAB SLICER

OPERATION MANUAL

KS100E



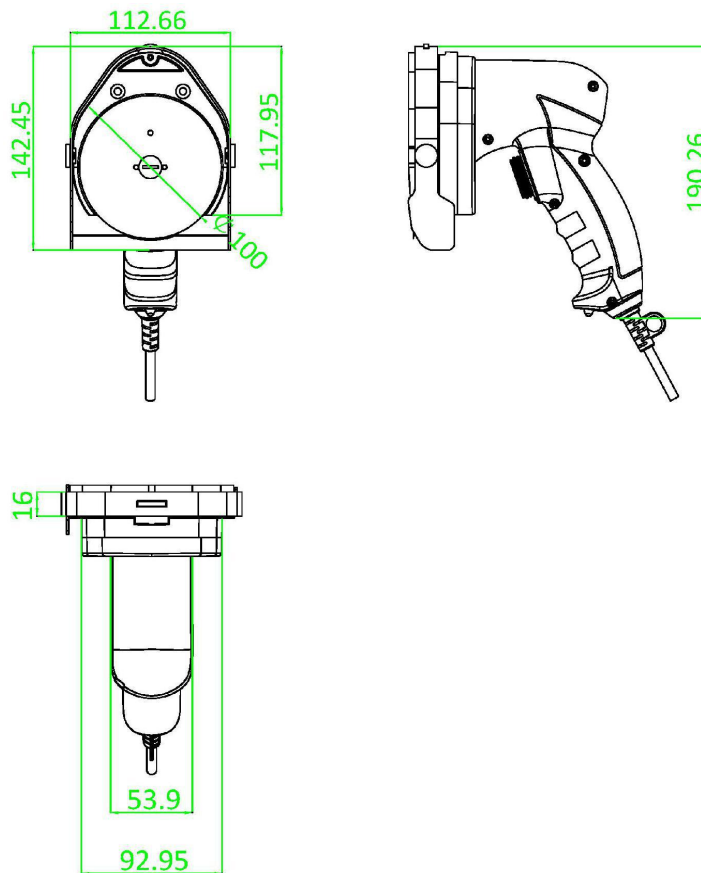
Read through carefully and understand these instructions before use.

1 Product DESCRIPTION

KS100E with knife protector



2 MAIN TECHNICAL PARAMETERS



1) Technical data of Unit

MODEL	VOLTAGE	POWER	KNIFE SIZE	CUTTING THICKNESS	MEASUREMENT
KS100E	12V battery	80W	Dia. 100mm	0~8mm	mm

2) Technical data of charger

Model:

Input:100-240V~/50-60Hz

Power:20W

Output:10.8~12VDC/1.5A

3) Technical data of battery

Model:

Capacity:2500mAh

3 SAFETY INSTRUCTIONS

3.1 PROPER USE

- 1) **KS100E** is exclusively intended for cutting grilled meat. The **KS100E** is designed for professional use in catering and must not be operated by children.
- 2) Only use the **KS100E** with original accessories. Any other type of use is hazardous and can result in serious injury.
- 3) The **KS100E** must never be operated without knife protector.
- 4) Before removing the knife protector, always disconnect from the battery pack.



CAUTION

Non-compliance with the following instructions can cause electric shock, fire and serious injury.

- ▲ All instructions must be read.
- ▲ Keep these instructions in a safe place.

3.2 WORKPLACE

- ▲ Keep your workplace clean and tidy.
- ▲ Position the **KS100E** a sufficient distance away from gas flames or other heat sources, in order to prevent the casing or cable from melting.
- ▲ Observe the hygiene regulations that are valid in your country.

3.3 ELECTRICAL SAFETY

Water permeating an electrical device increases the risk of electric shock.

- ▲ Keep the **KS100E** away from moisture.

3.4 SAFETY FOR BATTERY PACK

- 1) Avoid unintentional switching on ,ensure the on/off switch is the off position before inserting battery pack.
- 2) Do not open the battery.
- 3) Protect the battery against heat, e.g., also against continuous sun irradiation and fire.
- 4) In case of damage and improper use of the battery, vapors may be emitted. Provide for fresh air and seek medical help in case of complaints.
- 5) When the battery is defective, liquid can escape and come into contact with adjacent components. Check any parts concerned.
- 6) Use the battery only in conjunction with your KS100E.
- 7) Only use KS100E charger to charge the battery.
- 8) Do not crush, drop or damage the battery pack. Do not use a battery pack or charger that has been dropped or received a sharp blow. A damaged battery is subject to explosion. Properly dispose of a dropped or damaged battery immediately.
- 9) Do not charge a battery tool in a damp or wet location.

3.5 SAFETY FOR CHARGER

- 1) Protect the battery charger from rain and moisture.
- 2) Do not charge other batteries.
- 3) Keep the battery charger clean.
- 4) Before using, always check the charger, cable and plug. If defects are detected, do not use the charger, never open the charge.
- 5) Do not operate the charger on easily inflammable surface(e.g. paper, textiles,etc.) or combustible surrounding.
- 6) Plug the charger within the listed voltage range on the charger.
- 7) Unplug the charger from the electrical outlet before attempting any maintenance or cleaning to reduce the risk of electric shock.
- 8) Disconnect charger from the power supply when not in use.
- 9) Do not touch the uninsulated portion of output connector or uninsulated battery terminal.

3.6 SAFETY OF PERSONS



WARNING

Cutting hazard!

The knife is very sharp.

- ▲ Always work carefully. Observe the instructions.
- ▲ Only use the knife with a correctly mounted knife protector and adjustments ring.
- ▲ Do not use the KS100E with a defective knife protector a defective adjustments ring.
- ▲ Wipe defective parts.

A tool or spanner found in rotating device parts can lead to injury.

- ▲ Remove the adjusting tools or spanner before switching on the **KS100E**.

Many accidents are caused by poorly maintained electric tools.

- ▲ Maintain the **KS100E** with care.

▲ Check whether moving device parts function faultlessly and do not jam, Whether parts are broken or so damaged that the functioning of the **KS100E** is impaired.

- ▲ Have damaged parts repaired prior to using the **KS100E**.

- ▲ Keep original packaging for safe storage and safe transport.

3.7 ENVIRONMENT PROTECTION

1) Slicers, accessories and packaging should be sorted for environment-friendly recycling.

2) Slicer and accessories at the end of their service life still contain large amounts of valuable raw materials and plastics which can likewise be fed back into a recycling process.

3.8 SERVICE

Only have your KS100E repaired by qualified service personnel and only with original spare parts.

3.9 HYGIENE

- ▲ Unwashed hands can harbor germs and transfer these to food.
- ▲ Check scraper for cleanliness and proper functioning on a daily basis.
- ▲ Change defective scrapers immediately.
- ▲ Wash hands before and after contact with food.

4 OPERATION

4.1 BATTERY CHARGING

- 1) Use only the KS100E original charger. Only this charger is matched to the Lithium-ion battery of kebab slicer.
- 2) The battery is supplied partially charged. To ensure full capacity of the battery, please completely charge the battery before using the kebab slicer for the first time.
- 3) The lithium-ion battery can be charged at any time without reducing its service life Interrupting the charging procedure does not damage the battery.



WARNING: ▲ Do not continue to press the on/off switch after the machine has been automatically switched off. The battery can be damaged.
To remove the battery, press the battery release button and pull out the battery. Do not exert any force.

4.2 LED FUNCTION OF CHARGER

BATTERY PACK	RED LED	GREEN LED	ACTION
	Off	On	Prepare for charging
Charging	On	Off	Charging
Fully charged	Off	On	Charging is complete Maintenance charging
Battery can not be charged	On/Flash	Off	Delay charging(too hot) /Defective battery

4.3 REPLACEMENT OF THE KNIFE



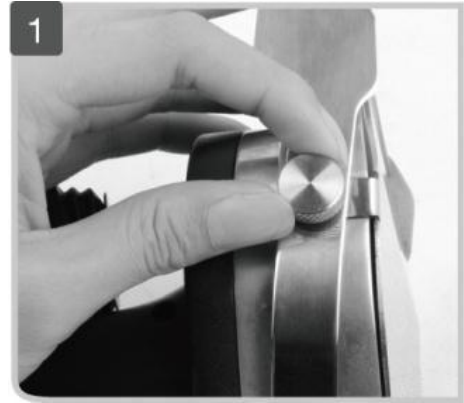
WARNING

Risk of death,
Due to unintended starting up of the
▶ Disconnect the KS100E
from the KS100E power supply



WARNING

Risk of injury!
The knife is sharp.
Deep cuts can be caused.
▶ Remove the knife carefully



**Remove the lock screw and
adjustment ring.**



Remove the knife protector



Remove knife.



CAREFUL

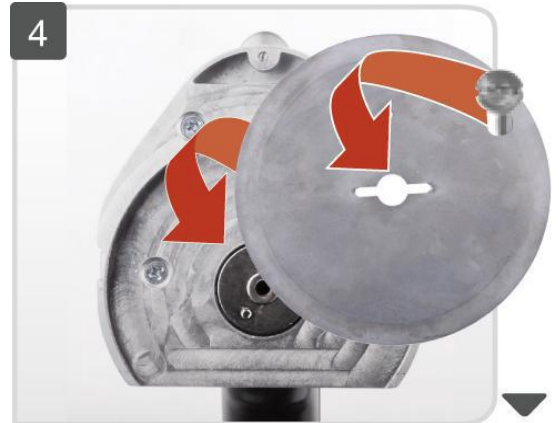
Malfunction!

Incorrect installation of the knife
Prevents correct functioning of the
KS100E

► Always install the knife with the
sharpened side toward the motor



Attach the knife protector and
Lock screw.



Insert the new knife,
screw on the retention disk
and fastening.

4.4 Cutting CUTTING MEAT

Meat is grilled from the outside to the inside. The inside meat is still raw.



Cutting thicknesses of 0.5mm to 8mm can be set.

- ▶ In order to do so, turn the adjusting screw to the left (large) or right (smaller).



WARNING

Risk of injury!

- ▶ Check that the knife protector is correctly seated
- ▶ Ensure a secure stand
- ▶ Always work from top to bottom
- ▶ Only cut grilled meat
- ▶ Only turn the KS100E on when it has been applied to the kebab

5 Hygiene/Cleaning

HYGIENE INSTRUCTIONS

General hygiene instructions

- Wash hands before and after contact with food
- Cover open wounds with a waterproof plaster
- Avoid touching food with naked hands
- Clean and disinfect all devices daily

Handling food

Heat meat through to at least 70°C

Store meat at below 5°C or freeze (below -18°C)

Avoid contact between raw and cooked food

6.CLEANING

Detergent

- Boiling water
- Dishwashing detergent
- Fat solvents
- Disinfectant



WARNING

Electric shock, device damage !

Moisture damages the electric unit in the KS100E. This can result in injury from electric shock.

- ▶ Do not clean the KS100E in the dishwasher.

CLEANING PROCEDURE



WARNING

Risk of death,

Due to unintended starting up of the **KS100E!**

- ▶ Disconnect the KS100E from the power supply



WARNING

Risk of death,

The knife is sharp. Deep cuts can be caused.



Remove knife

CLEANING PROCEDURE

1. Remove the knife carefully.



2. Remove heavy soiling on the knife, protector with cleaning aids, such as sponges and brushes.

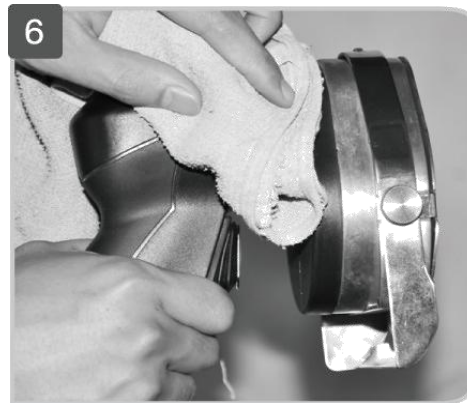


3. Spray all surfaces with a fat solvent.

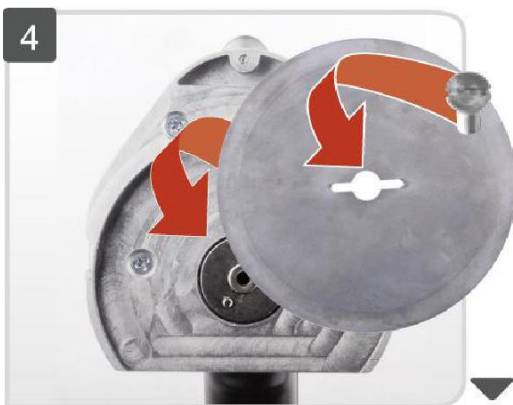
4. Spray on disinfectant and Allow it to take effect for at least 5 minutes.



5. Rinse off **KS100E**, knife, protector and cleaning aids.



Dry off KS100E



7. Insert the new knife, screw on The retention disk and fastening screw.



8. Attach the knife protector and lock screw.

Clean the knife and **KS100E** prior to sharpening. After the sharpening process, Carry out cleaning and disinfection again.

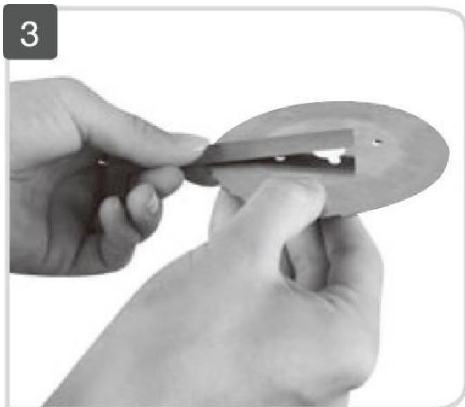
Sharpening the knife



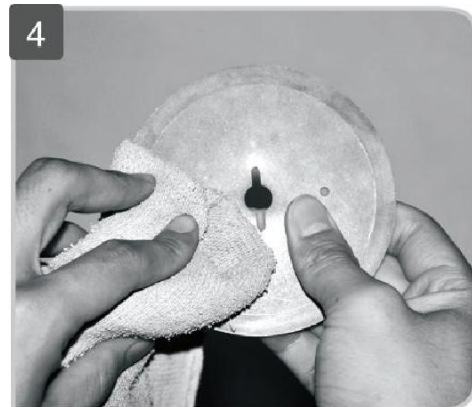
Sharpen the circular knife without
Teeth for approx.1 to 2 seconds
At a very flat angle from the bottom



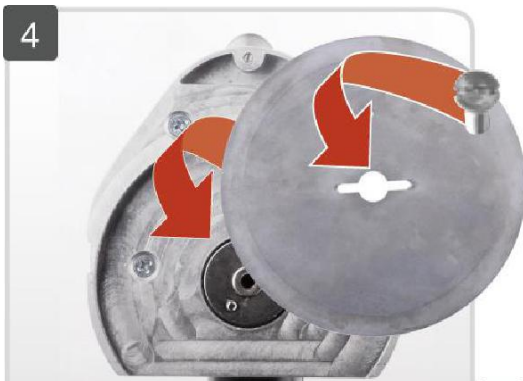
Briefly deburr from the top side.



Debur the ground section
From the front



Clean the knife



Insert the new knife, screw on
The retention disk and fastening screw.



Attach the knife protector
And lock screw.

1	Knife protector	17	Belt
2	Fastening screw	18	Seal ring
3	Knife	19	Motor gear
4	Adjustment ring	20	Ring washer
5	Output axis	21	Motor
6	Oil seal	22	Seal ring
7	Bearing	23	Housing
8	Adjustment screw	24	Screw
9	Bolt	25	Screw
10	Screw	26	Switch
11	Gasket	27	Circuit board
12	Body	28	Reset cap
13	Lock screw	29	Power cord
14	Bearing	30	Screw gasket
15	Pulley	31	Screw
16	Jump ring		

Circuit Diaram

