

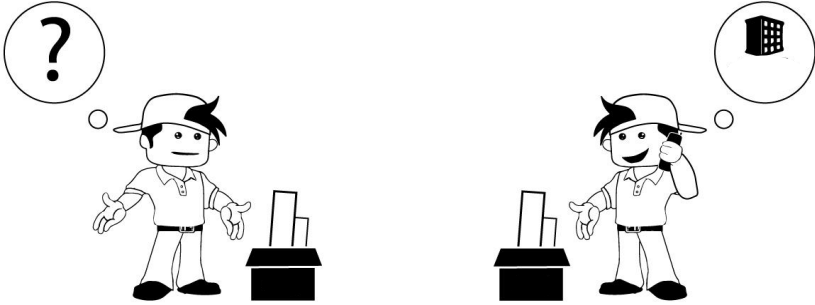
100AA-75

100AA



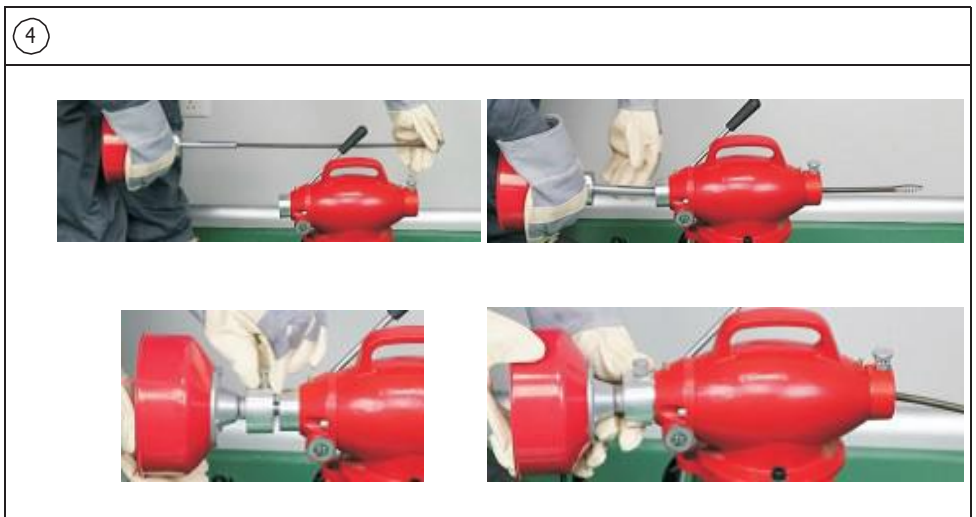
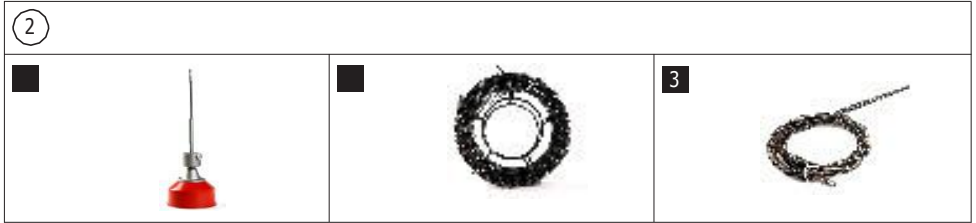
75





Language table

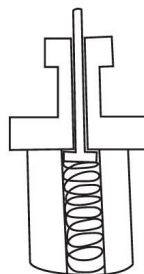
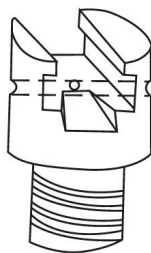
User manual	5
-------------------	---



5



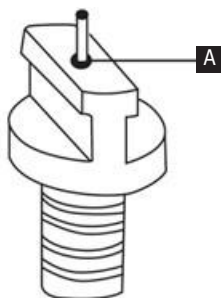
6



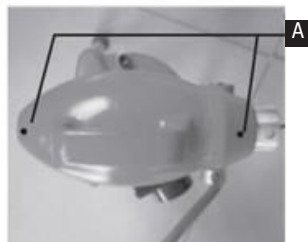
7



8



9



1 General warnings

Read all the instructions and warnings carefully before using this product. Failure to follow warnings and instructions can result in severe injury, death, or property damage. Before installation, check if all accessories are complete and without damage. If not, contact customer service. Keep these instructions in a safe place for future reference. Use this product with its original parts only. vidaXL cannot be held responsible in the event of damage or injury due to incorrect use of this product. The information contained in this manual is believed to be correct at the time of printing. However, vidaXL reserve the right to change or modify any of the specifications without notice or obligation to update existing units. Repairs should only be carried out by a specialist or a professional and experienced technician. Never attempt to repair the product yourself.

2 Introduction

Features:

1. Applicable for all kinds of drain pipes between $\Phi 20$ -100mm
2. Press the clutch control handle, the rotating speed is up to 400 rpm.
3. The soft shaft stops when the handle is released.
4. Feeding and backing the (flexible) soft shaft to the cleaning machine by hand.
5. There's a 3-way switch on the machine. Rotation ("1"; "2"), and "0" stop. While shifting, stay in "0", until the machine stops.

3 Symbol clarification

See image 1

Safety signs and warning words used to convey important safety information on the manual and the product. This section will help you to understand the safety signs and warning.

⚠ Dangerous situation, need to be cautious, take precautions, negligence will cause death or serious injury.

1. Please read the operation manual carefully before using the machine. It contains Important safety information and showing how to operate the machine correctly.
2. When in use of machine, please make sure you have put on a guard and with eye protector function of the safety glasses, which can reduce the risk of eyes hurt.
3. There's a risk of hands, fingers and other body parts getting involved in the machine.
4. There's a risk of electric shock.

5. There's a risk of getting involve in belt and pulley.

4 Warnings and personal safety

- This machine is fitted with a 3-core cable and plug.
- Connect the machine to a suitably earthed General Purpose Outlet (GPO) only.
- Please wear a pair of leather gloves.
- DO NOT use soft gloves or cloth when rotating the flexible soft shafts, to injury while operating the machine.
- If the drill or soft shaft is stuck, stop operating immediately. The soft shaft may be damaged by using extreme force while twisting and can cause serious accidents.
- ALWAYS wear leather gloves while feeding and backing the soft shaft by the hand(s).
- When using $\Phi 16$ mm, make sure the whole soft shaft is out of the basket to avoid damage to the product or personal injury.
- The distance between the machine and drain entrance should be no more than 60cm. Longer distance would cause distortion or knots in the soft shaft.
- This machine must be operated by a single person. Stop the machine whenever the soft shaft stops rotating, to avoid damage of the product or personal injury.
- DO NOT let the water drop when the soft shaft getting through the machine, as the machine can be damaged by water and can cause electrical leakage.
- DO NOT wear loose clothes or jewellery while operating the machine to avoid getting pulled or stuck in the machine.
- You will always find hazardous substance in the drain, which is harmful to the health. ALWAYS take proper safety measures while operating the machine. Always wear leather/rubber gloves, safety glasses, veiled and steel-toed boots.
- Always keep yourself clean. Washing your hands and your body by warm suds. DO NOT eat or drink anything while operating the machine, to avoid inhaling harmful substances.
- DO NOT operate the machine in water, which would cause electric shock and even death.
- ALWAYS operate the machine according the manual. Do not use the machine for any other purpose to avoid accidents or severe injuries.

5 Operation Guide

1. Connect the machine to a safe electrical power supply.
2. Select a suitable soft shaft with a right drill head.

3. Clean a drain pipe ($\Phi 20-75\text{mm}$) with Flexible soft shaft combination, please follow below instructions:

See image 4

- 1) Assemble the soft shaft using the right length and longer than the machine.
- 2) Let the soft shaft get through the machine from the entrance and close to the handle, lift up the pin, then pull the soft shaft into the machine and rotate it. Then release the pin to fix it.
- 3) Insert the soft shaft into the drain pipe as deep as possible. Do not stop until it's locked. Turn the switch to "1" or "2". Hold the soft shaft with one hand and press down the control handle with the other hand, to get soft shaft start rotating. Release the control handle, feeding the soft shaft again, repeat rotation until the pipe is clear.
- 4) After operation, pull out the soft shaft, clean it with engine oil before packing into the soft shaft combination.
4. To clean a drain pipe($\Phi 32-100\text{mm}$) with soft shaft($\Phi 16\text{mm}$), please follow the below instructions:

Manual operation:

- 1) Select a soft shaft with suitable length from the shaft holder (use a key if necessary).
- 2) For pipes with curve, please choose a flexible soft shaft. Get the shaft go through the machine
- 3) Assemble the Olivary drill cutter in the front of the (flexible) soft shaft.
- 4) Insert the flexible soft shaft into the drain pipe as long as possible, don't not stop until it's locked in.
- 5) Turn on the machine by switch position as "1" or "2".
- 6) Please hold the flexible soft shaft and push it into the drain pipe with one hand and press down the control handle with the other hand to get the soft shaft rotating.
- 7) When you need a longer soft shaft, release the control handle. Then push into the drain pipe.
- 8) Repeat rotating the soft shaft until the drain pipe is clear.

6 Additional information

6.1 F.A.Q.

1. How to get through a pipe curve quickly?

See image 5

- 1) Try to push the soft shaft into the drain pipe when it's rotating or not.
- 2) Change the direction of rotation to work for a few seconds.
- 3) Choose a small diameter (flexible) soft shaft. Or other models of the cleaning machine.
2. How to release the drill cutter from blockage?
 - 1) Turn the switch position to "0" to stop the machine, try to pull the soft shaft out from the blockage.
 - 2) If failed, turn the switch position to "1" or "2", hold the rotating soft shaft for a few seconds with both hands and then pull it back until it gets out of the blockage.

- 3) Turn the switch position to "1" or "2", then step "b".

3. Storage the soft shaft after operation:

- 1) Turn off the switch to position "0". Then you can pull the soft shaft out of the drain pipe.
- 2) Disassemble the drill cutter.
- 3) Clean the soft shaft before the storage it into the holder.
4. Assembling and disassembling of the soft shaft and drill cutters:

- 1) Plug and socket

- 2) Disassemble:

Insert a key - Reverse thrust - Done

See image 6

- 3) Assemble:

Socket inclined hole upward. The plug and the socket in superposition, then reverse thrust - Done

See image 7

- 4) When the plug and the socket connectors in superposition make sure the pin of plug connector gets through the key hole in the socket. Ensure the 2 connectors are in good superposition.
- 5) While assembling or disassembling the connectors, please make sure your fingers are not covering the key hole. Otherwise, injury would be occurred.

7 Maintenance and cleaning

Make sure the machine is switched off and disconnected from the electric power supply.

Always wear a leather gloves and safety eyes glasses when maintaining or repairing the machine.

1. Soft shafts

Always clean the soft shaft with water after operation to avoid being rusted by chemical substances. Clean the soft shaft with simple engine oil periodically. Dry the soft shaft with a cotton or similar fabric before packing into the holder. Always drip some engine oil into the soft shaft pin (as shown in the figure) to avoid the spiral being rusted.

Do not apply the oil on the soft shaft when it's rotating to avoid the splashing of engine oil.

See image 8

A	Soft shaft pin
---	----------------

2. Cleaning machine unit

Always keep the machine dry. Wipe the machine with dry fabric to remove the water inside. Add some lubricating oil and clean the machine before storing it in a dry place with good ventilation.

While operating the machine after a long-term storage, check if the rotation is in good condition before connecting the machine to the electric power supply. If the rotation is not working when the motor is on or the control handle is pressed down switch off the machine immediately to avoid damage further damage.

Once again try to clean and lubricate the machine before checking. If the machine fails to work contact a professional technician.

3. Lubrication

Always add some light diffusive engine oil to the machine before and after use. Turn on the machine with rotation for a few seconds, in order to prolong life-span and avoid damages. Drip some engine oil into the soft shaft pin to avoid the spiral being rusted.

See image 9

A	Lubrication hole
---	------------------

8 Technical specifications

8.1 Drain cleaner unit

Model	100AA-75
Motor	250W
Speed	400RPM
Drain Pipes	D20-100mm
Max Working Length	30m
Drain Cleaner Type¹	220V/110V, 50HZ/60HZ

8.2 Soft shafts

See image 2

Number	SKU	Part Name	Outer Diameter	Wire Diameter	Length	Qty	Purpose
1	100AA	Φ10mm*7m Flexible soft shaft combination	Φ10mm	Φ2.0mm	7m	1	Suitable for drain pipes with multiple curves, or small diameter pipes.
	75						
2	100AA	Φ16mm soft shaft	Φ16mm	Φ3.5mm	2.5m	7	Suitable for drain pipes Φ32-100mm. Length of soft shaft can be extended to 40m.
	75					7	
3	100AA-75	Φ15mm Flexible soft shaft	Φ15mm	Φ2.5mm	2.5m	1	Suitable for drain pipes with multiple curves.

8.3 Drill heads

See image 3

Number	Part Name	Diameter	Purpose
1	Retrieving auger	Φ16mm	For searching soft shafts lost in the drain pipe and also cleaning hair/sanitary towel/textile fabrics/plastic bag that blocked inside.
2	Olivary auger	Φ16mm	For drain pipe with multiple curves and pipes blocked by hair/ textile fabrics.
3	Spiral serrated cutter	Φ16mm	For pipes blocked with tree stump. For example: root, chip, leaves.
4	U shape cutter	Φ16mm	For pipes blocked with grease.
5	Grease cutter	Φ16mm	For pipes blocked with grease.
6	4-blade cutter	Φ16mm	For pipes blocked with chemical precipitation and tough blockage.
7	Key		For disassembling drill heads and soft shafts.