



WARNING

The following is the setting of this equipment, use, grounding, maintenance and repair of general warnings related. In addition, in the present manual Other suitable places there are even more explicit warnings. Signs appear throughout this manual refer to these general warnings. When the manual


These symbols appear somewhere, go back to the following pages a description of the specific hazard.

 Fire and explosion hazards
Solvent and paint fumes and other flammable fumes in work area can ignite or explode.
To help prevent fire and explosion:

- In a well ventilated area using only this device.
- Eliminate all ignition sources such as pilot lights, cigarettes, portable electric lamps and plastic drop cloths (potential static arc).
- Spraying opportunity spark. When the sprayer flammable liquids or flammable liquids or flammable liquids in the vicinity When the body is flushing or cleaning, keep sprayer at least 20 feet away from explosive vapors (6m).
- Keep work area free of solvent, debris, gasoline and other debris.
- Do not plug or unplug power cords or turn lights when flammable fumes are present.
- The work area equipment and conductive objects. Read Grounding instructions.
- If there is static sparking or you feel a shock, stop operation immediately. Until you identify and correct the problem, do notUsing the device.
- Keep a fire extinguisher in the work area.

 Shock hazard
Improper grounding system is provided incorrect or improper use can cause electric shock.

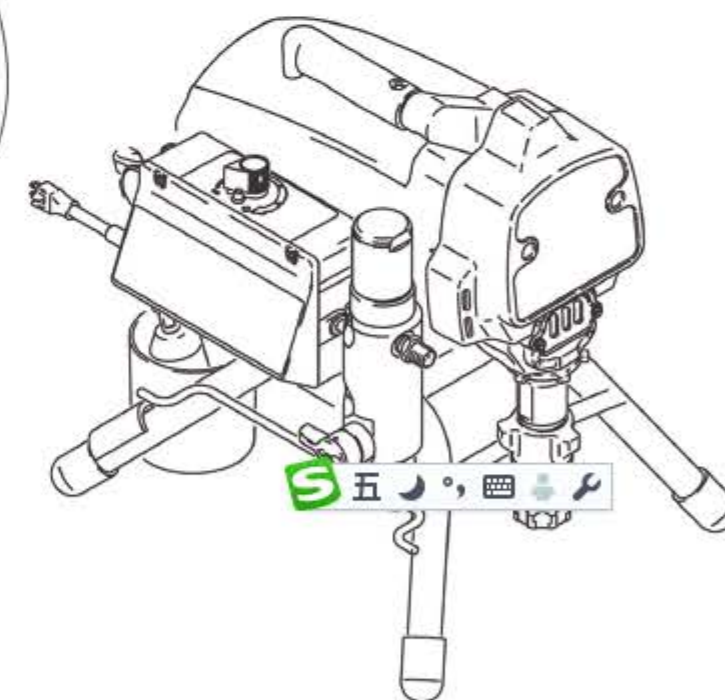
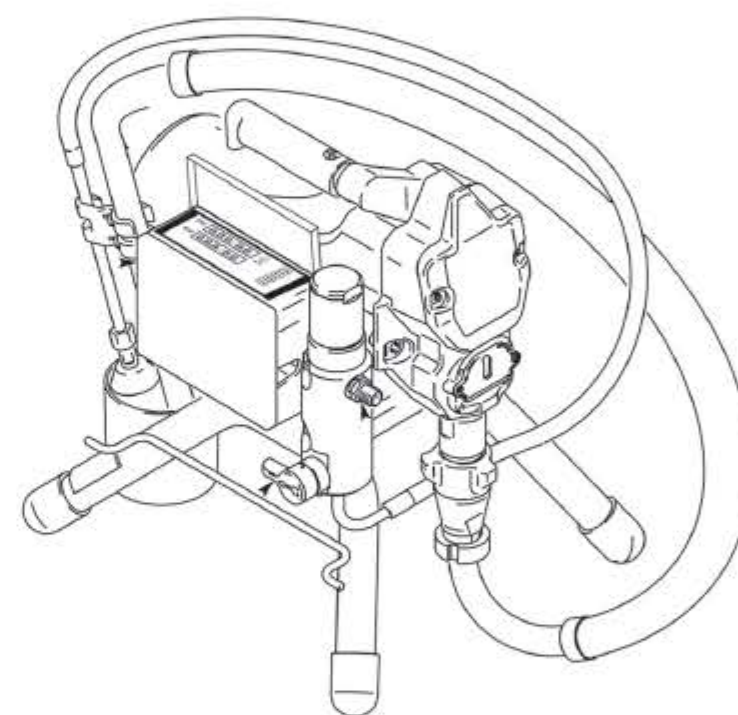
- Before servicing equipment, turn off the power and disconnect the power cord.
- Use only grounded electrical outlets.
- Use only three-core extension cords.
- Ensure ground sprayer and extension cords prongs are intact.
- Do not expose to rain. To be stored indoors.

 SKIN INJECTION HAZARD
From the gun, hose leaks, or ruptured components emitted by the high-pressure fluid can pierce the skin. Injuries look like "just
A cut mouth, "it is a serious injury that can result in amputation. Get immediate surgical treatment.

- Do not point the gun at anyone or any part of the body.
- Do not put your hand over the nozzle.
- Do not hand, body, glove or rag stop or deflect leaks.
- Engage trigger lock when not spraying.
- When you stop spraying and before cleaning, checking, or servicing equipment, follow the Pressure Relief Procedure in this manual.

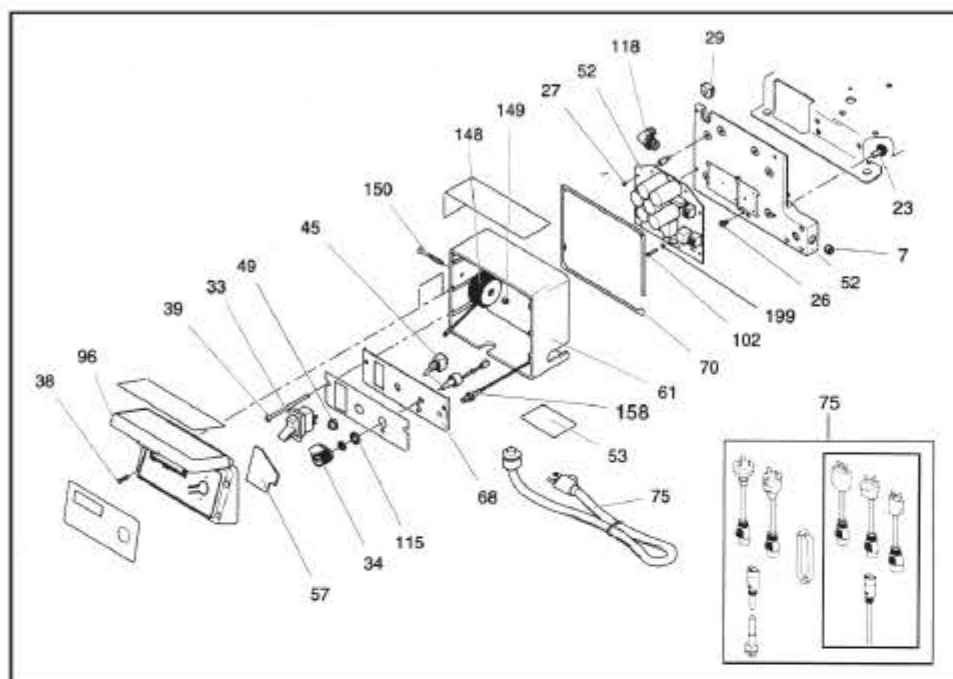
NO.	NAME		
101	Guide sleeve		
102	fasten the screw nut		
103	O-ring		
104	Positioning sleeve		
105	Leather seal		
106	UPE seals		
107	Positioning sleeve		
108	Plunger rod		
109	On the wire connector		
110	Steel sleeve		
111	O-ring		
112	Positioning sleeve		
113	UPE seals		
114	Leather seal		
115	Positioning sleeve		
116	Under the scraper		
117	Small ball		
118	Steel ball seat		
119	Positioning flower blue		
120	Big ball		
121	Big ball seat		
122	O-ring		
123	Under the steel body		

HIGH PRESSURE AIRLESS SPRAYER MANUAL

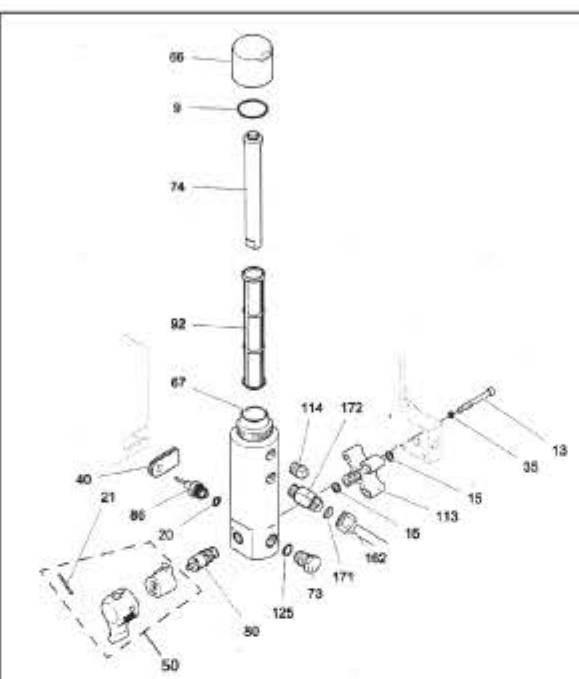


SPRAYER - PART 4

4-1



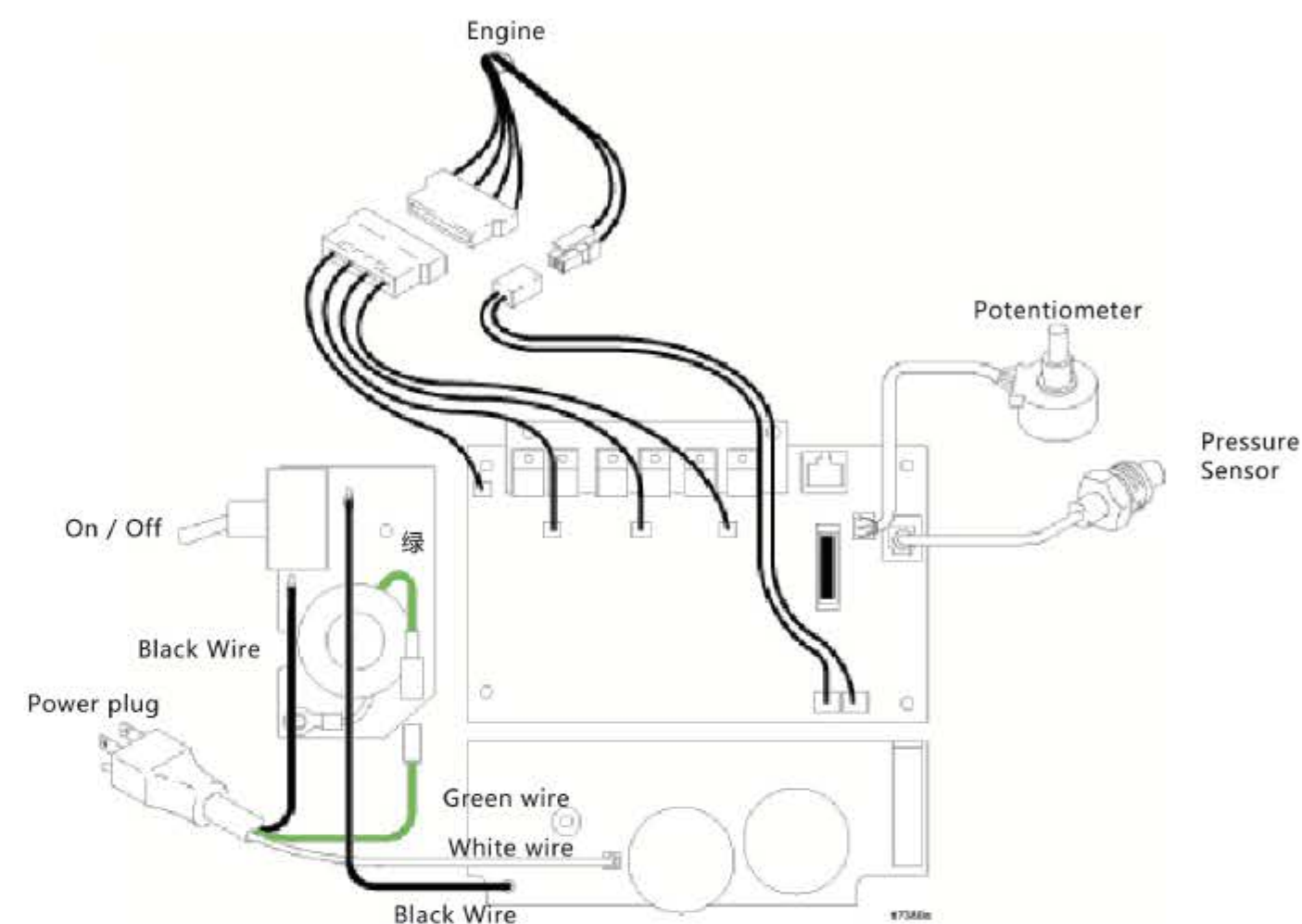
4-2



SPRAYER - PARTS LIST4

4-1			4-2		
No.	Product name	Quantity	No.	Product name	Quantity
7	Plugs, pipe	1	96	Controller Cover	1
23	Nuts, flange head	2	102	Screws, diode	1
26	Screw	1	115	Gasket	1
27	Screw	1	118	Fitting	1
29	Grommet, motor lead	1	148	Coil	1
32	Screw	3		Including nuts and bolts	
33	Switch	1	149	Lock nut	1
34	Knobs, potentiometers	1	150	Screw	1
38	Screw	4	158	Switch	1
39	Screw	4	199	Spacer ring	2
45	Switch	1			
49	Boots switch	1			
52	Control panel;	1			
53	Labels, transparencies	2			
57	PAD, foam	1			
61	Control box	1			
68	Control panel	1			
70	Control box gasket	1			
75	Power cable	1			
			9	O-ring seal	1
			13	Screw cap, socket head	3
			15	Square Ring	2
			20	O-ring seal	2
			21	Pin	1
			35	Washers, lock, spring	3
			40	Transducer	1
			50	Handle sets	1
			66	Filter cap	1
			67	Filter	1
			73	Plugs, self-cleaning	1
			74	Filter tube	1
			80	Metal valve	1
			86	Pressure Sensor	1
			92	Liquid Filter	1
				30 mesh	
				60 mesh, Original Equipment	
				100 mesh	1
				200 mesh	1
			113	Manifold	1
			114	Plugs, pipe	1
			125	Oil seals, gaskets	1
			162	Tube	1
			171	Seal, Accessories	2
			172	Joints, 45 degree elbow	1

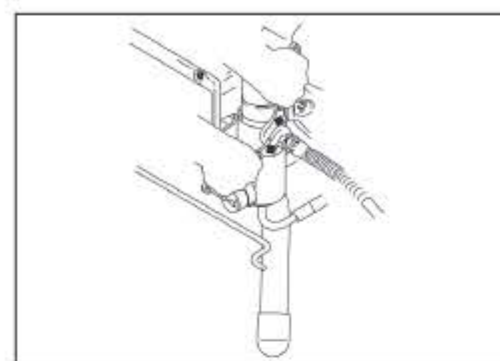
Wiring Diagram



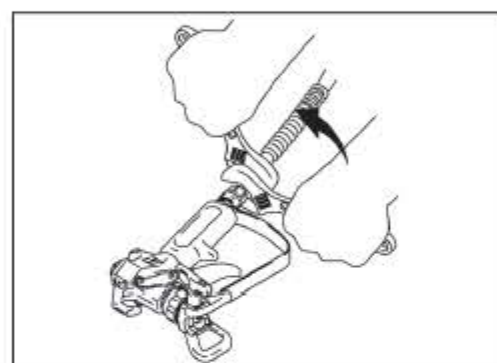
Technical Parameters

Model	Power supply	Power	Flow	Pressure	Weight
395/390	220V	2200W	2.5L	3000PSI	22KG
490/495/590	220V	2500W	2.5L	3000PSI	25KG
595/690	220V	2800W	3.0L	3000PSI	28KG
795/790	220V	3200W	4.0L	3000PSI	40KG
1095/890	220V	3800W	5.0L	3000PSI	45KG

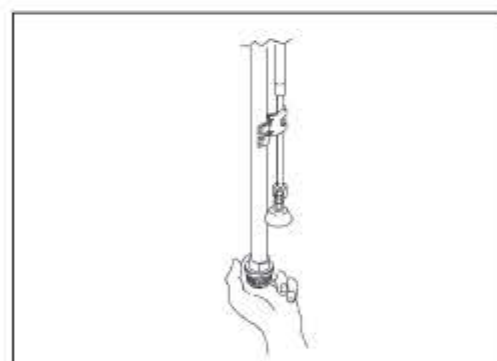
SETTING STEP



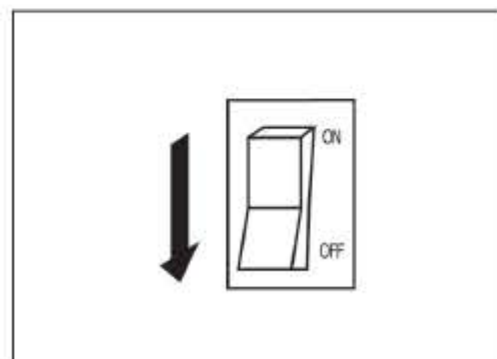
1, there will be no gas hose to the sprayer,
Tighten securely.



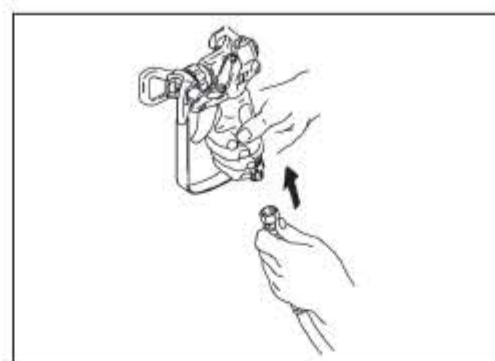
3, Tighten



5, Check inlet strainer for obstructions
and dirt.



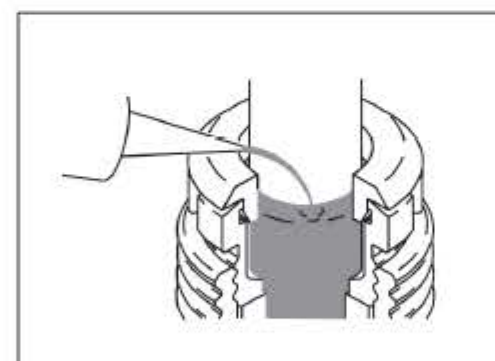
7, Turn off the power



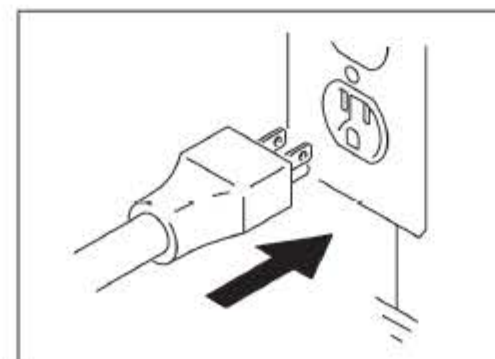
2, the other end of the hose to the
gun.



4, Remove tip guard



6, To the throat packing nuts with throat
seal liquid to prevent premature seal wear,
have to do every time you spray.

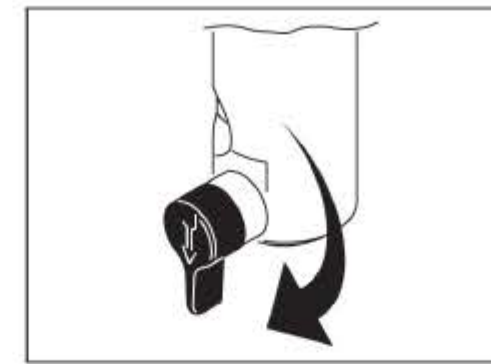
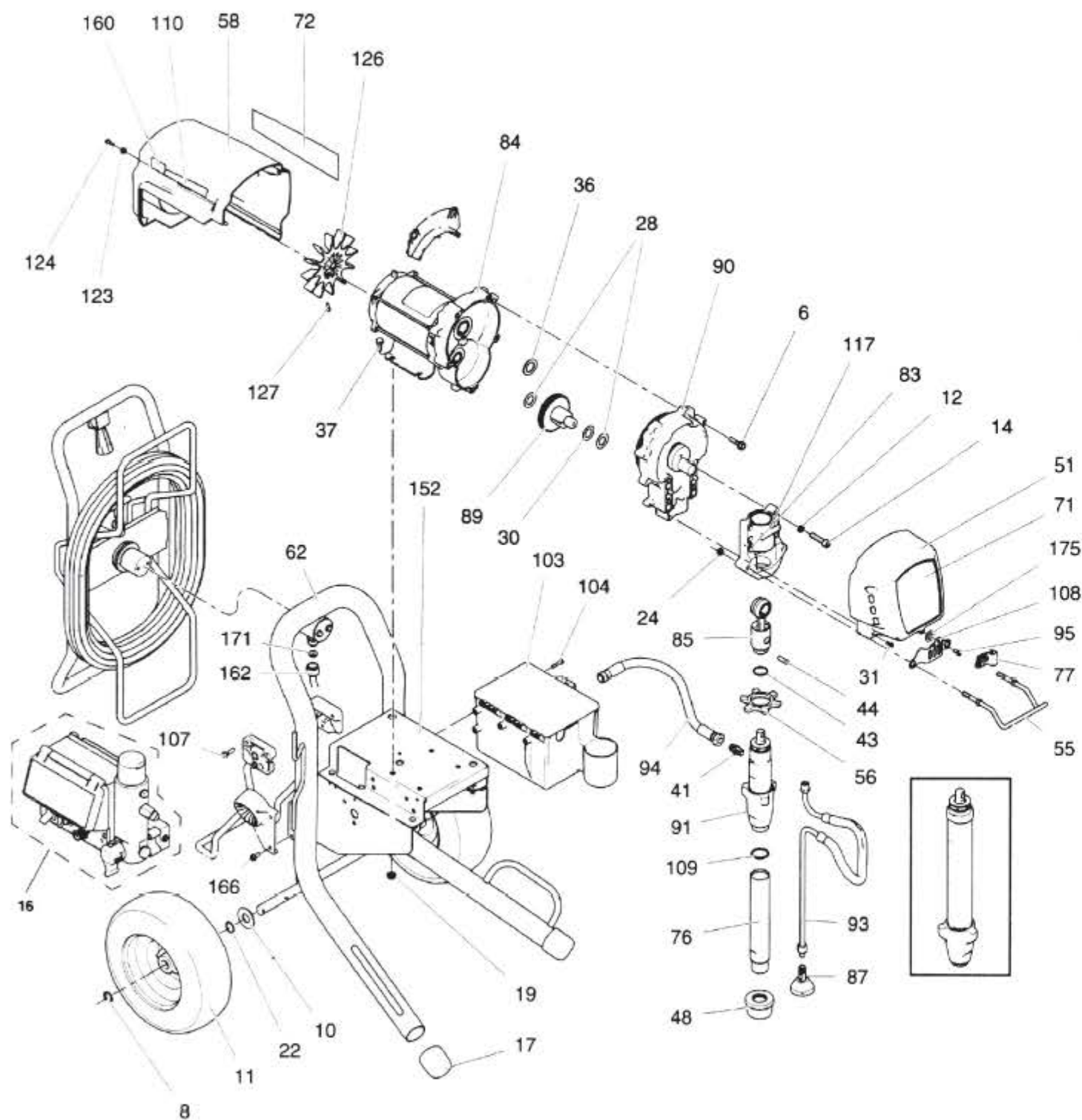


8, Plug the power cord into a properly
grounded electrical outlet.

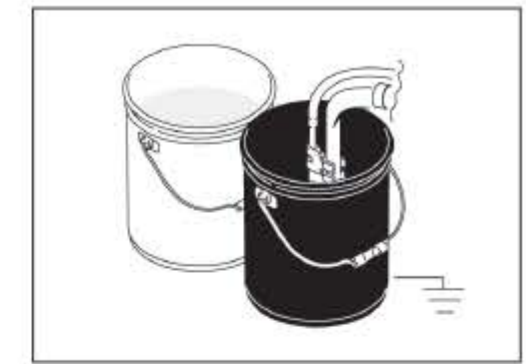
SPRAYER - PARTS LIST3

No.	Product name	Quantity	No.	Product name	Quantity
6	SHCS	5	87	Thread deflector	1
8	Clip, protect	2	89	Gear combination	1
10	Spacer ring	2	90	Drive housing	1
11	Tire	2	90a	Spacer ring	1
12	Washers, lock	4	91	Lower Pump	1
14	Screw caps	4	93	Drain hose	1
17	Pouches	2	94	Takeover	1
19	Hex nuts, flange head	8	95	SHCS	1
22	Washers, wave spring	2	103	Toolbox	1
24	Nuts, locking	2	104	SHCS	3
28	Spacer ring	2	107	SHCS	4
30	Spacer ring	1	108	Blanks	1
31	SHCS	4	109	O-ring	1
36	Spacer ring	1	123	Metal cover	2
37	Hex Nuts	4	124	Screw	2
41	On the wire	1	126	Fan	1
43	Fixed spring	1	127	Torx screws	1
44	Live Saixiao child	1	152	Frame, assembly	1
48	Filter	1	162	Tube	1
51	The front cover	1	166	SHCS	2
55	Shelf	1	171	Seal, Accessories	2
56	Fixing nut	1	175	Spacer ring	1
58	Motor protection cover	1			
62	Chassis	1			
76	Intake pipe	1			
77	Drain lines	1			
83	Bearing housing	1			
84	Motor	1			
85	Connecting rod	1			

SPRAYER - PART 3

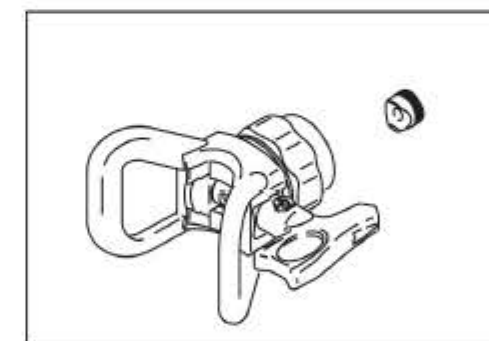


9、 The filler valve downward rotation.

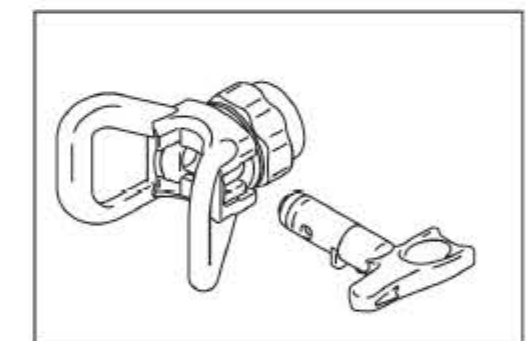


10、 The siphon tube set into the inner fluid filled with grounded metal pail. Pull to the wire with the bucket connected to a true earth ground. The oil is stored in sprayer washed away. Rinse water-based paint, oil paint and storage oil rinse with mineral spirits.

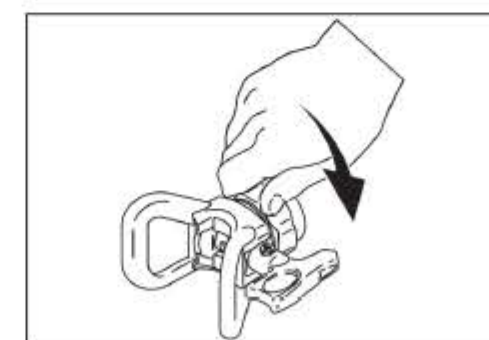
Nozzle and shroud



1、 The pressure to the lowest pressure

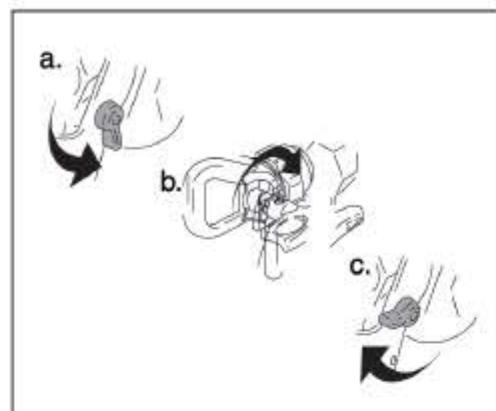


2、 Power

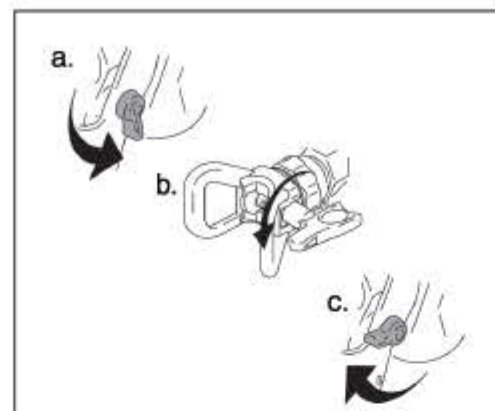


3、 The rotary assembly to tighten the gun

CLEAR BLOCKAGE

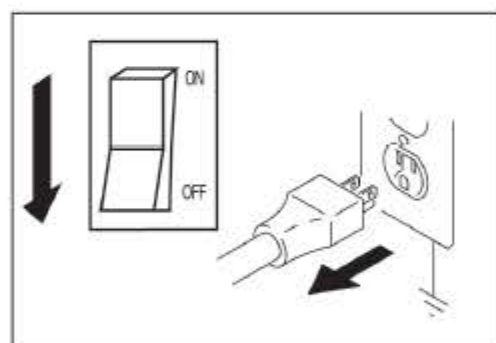


1. a.) the release of the trigger, put safety.
 - b.) the spinning nozzle.
 - c.) Open the safety pin.
 - d.) Trigger gun to clear the clog.
- Never point gun at your hand or a rag!



2. a.) lock safety pin.
- b.) is rotated to the original position.
- c.) to open the safety pin, and then continue spraying.

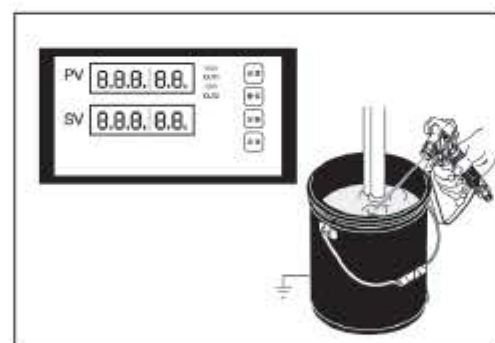
CLEANING



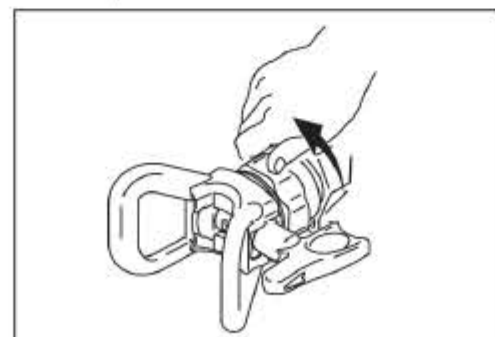
1. Turn off the power and unplug the power cord sprayer.



3. Drain hose into the bucket. The filler valve downward rotation.



2. The pressure to lowest setting. Trigger spray seizure trigger to relieve pressure.

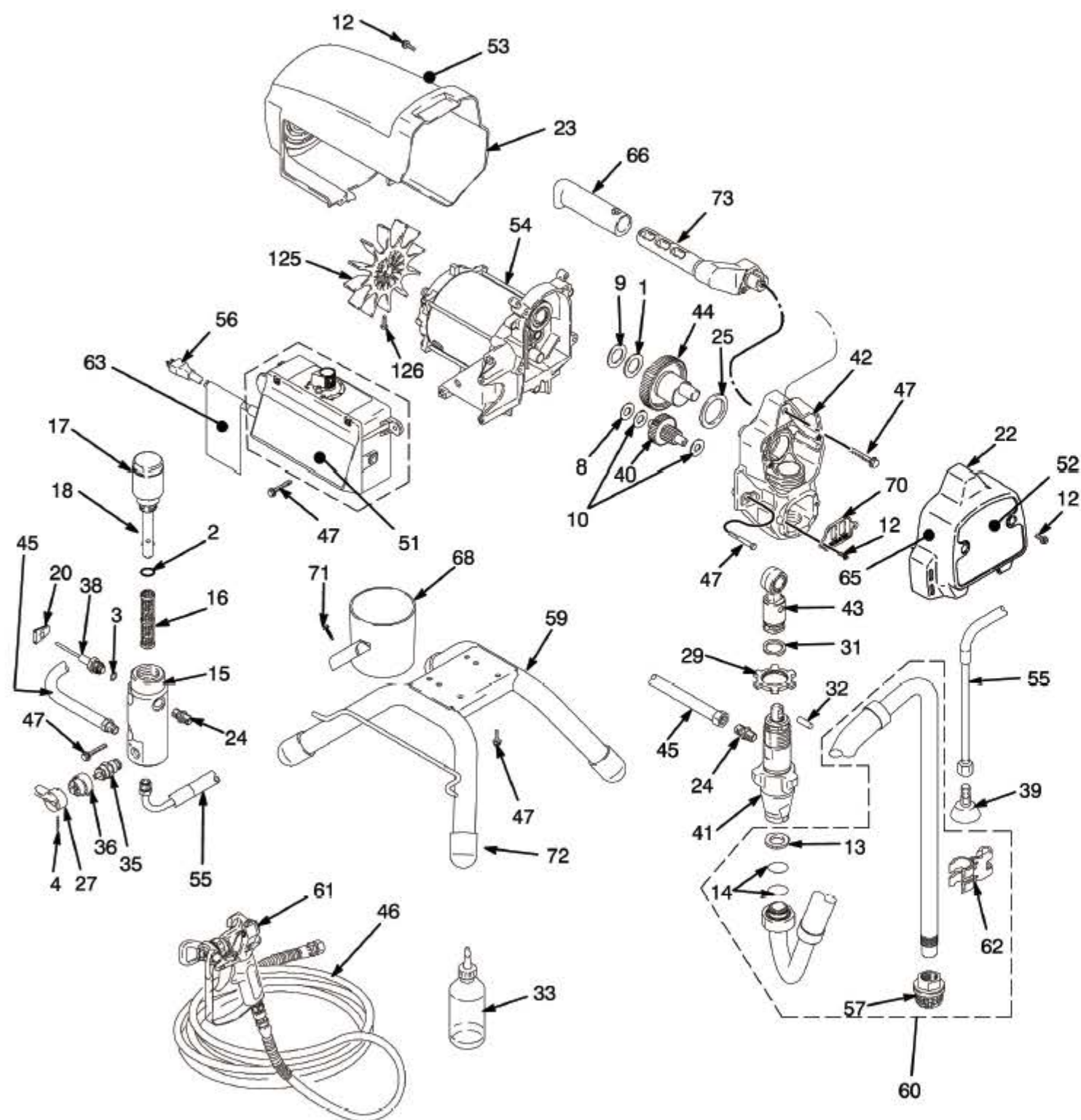


4. Remove the cover and nozzle

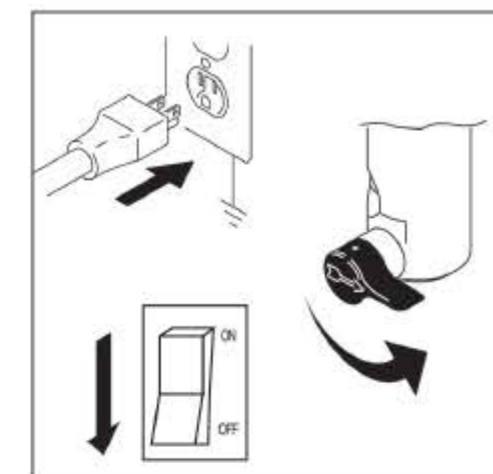
SPRAYER - PARTS LIST 2

No.	Product name	Quantity	No.	Product name	Quantity
1	Bearings, thrust	1	44	Gear, crankshaft	1
2	O-ring	1	45	Hose	1
3	O-ring	1	46	High pressure hose	1
4	Pin	1	47	SHCS	13
8	Spacer ring	1	51	Label	1
9	Spacer ring	1	52	Front label	1
10	Bearings, thrust	2	53	Side tag	1
12	SHCS	8	54	220V motors	1
13	Spacer ring	1	55	Return pipe	1
14	O-ring	2	56	Power cable	1
15	Aluminum filter rod	1	57	Filter	1
16	Liquid filters, 60 mesh	1	59	Support	1
17	Rod Cover	1	60	Suction hose	1
18	Filter	1	61	Spray gun	1
20	Transducer	1	62	Drain clamp	1
22	The front cover	1	66	Handle	1
23	Motor protection cover	1	68	Suction / discharge Cup	1
24	On the wire	2	70	Blanks	1
25	Bearings, thrust	1	71	SHCS	1
27	Valve wrench	1	72	Pouches	4
29	Flower-nuts	1	73	Handle	1
31	Fixed spring	1	125	Fan	1
32	Pin	1	126	Screw	1
33	Lecythus	1			
35	Valve, drain	1			
36	Base valve	1			
38	Pressure Sensor	1			
39	Thread deflector	1			
40	Gear reducer	1			
41	Takeover	1			
42	Drive housing	1			
43	Connecting rod	1			

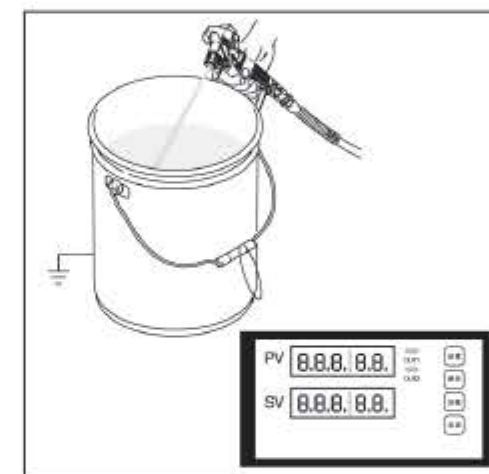
SPRAYER - PART2



5、 The siphon tube set from paint and place in flushing fluid. Water and water-based paint, oil paint with mineral spirits.



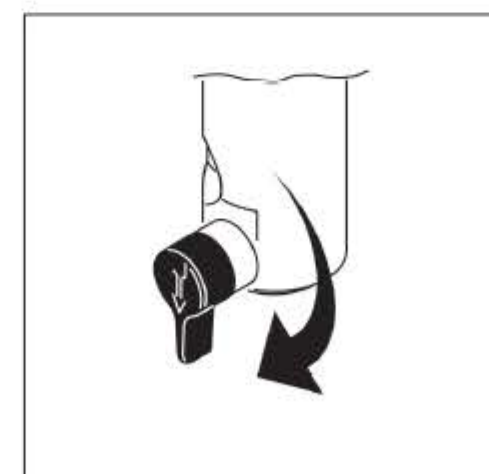
6、 Plug sprayer power cord. Power. The filler valve rotated to a horizontal position.



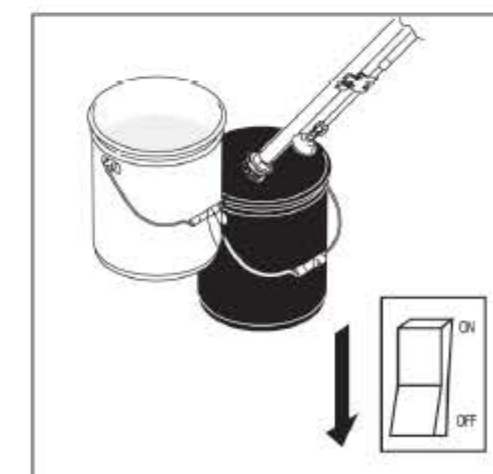
7、 Hold gun against paint pail. Trigger safety pin. Trigger gun and increase pressure until flushing fluid.



8、 Move gun to flushing pail, hold gun against pail, trigger gun to thoroughly flush system. Release trigger and lock trigger safety.



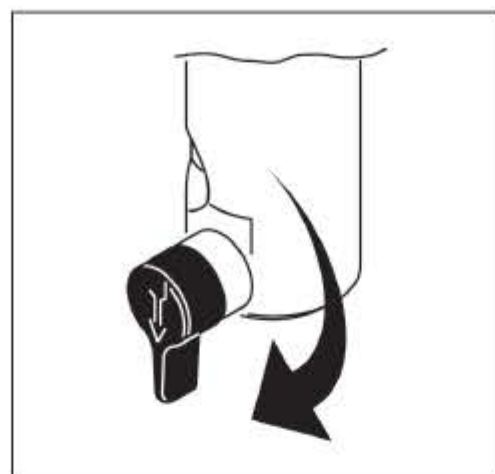
9、 The filler valve is rotated downward and then let flushing fluid to circulate 1-2 minutes to clean drain tube.



10、 The suction pipe raised above flushing fluid and run sprayer for 15 to 30 seconds to drain fluid. Turn off the power.



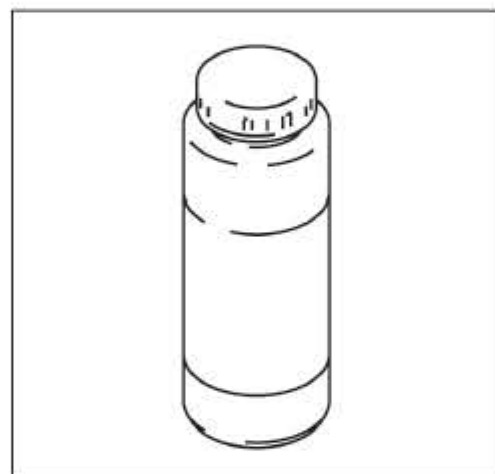
11、Close relief valve. Flushing pail gun trigger to discharge fluid hose.



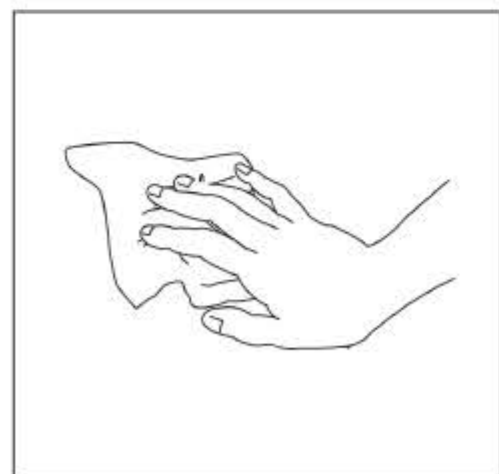
12、Open filler valve



13、 If equipped with a filter on the gun and sprayer, then remove them. Clean and inspect.



14、 If it is washed with water, re-wash again with mineral spirits to leave a protective coating to prevent freezing or corrosion.



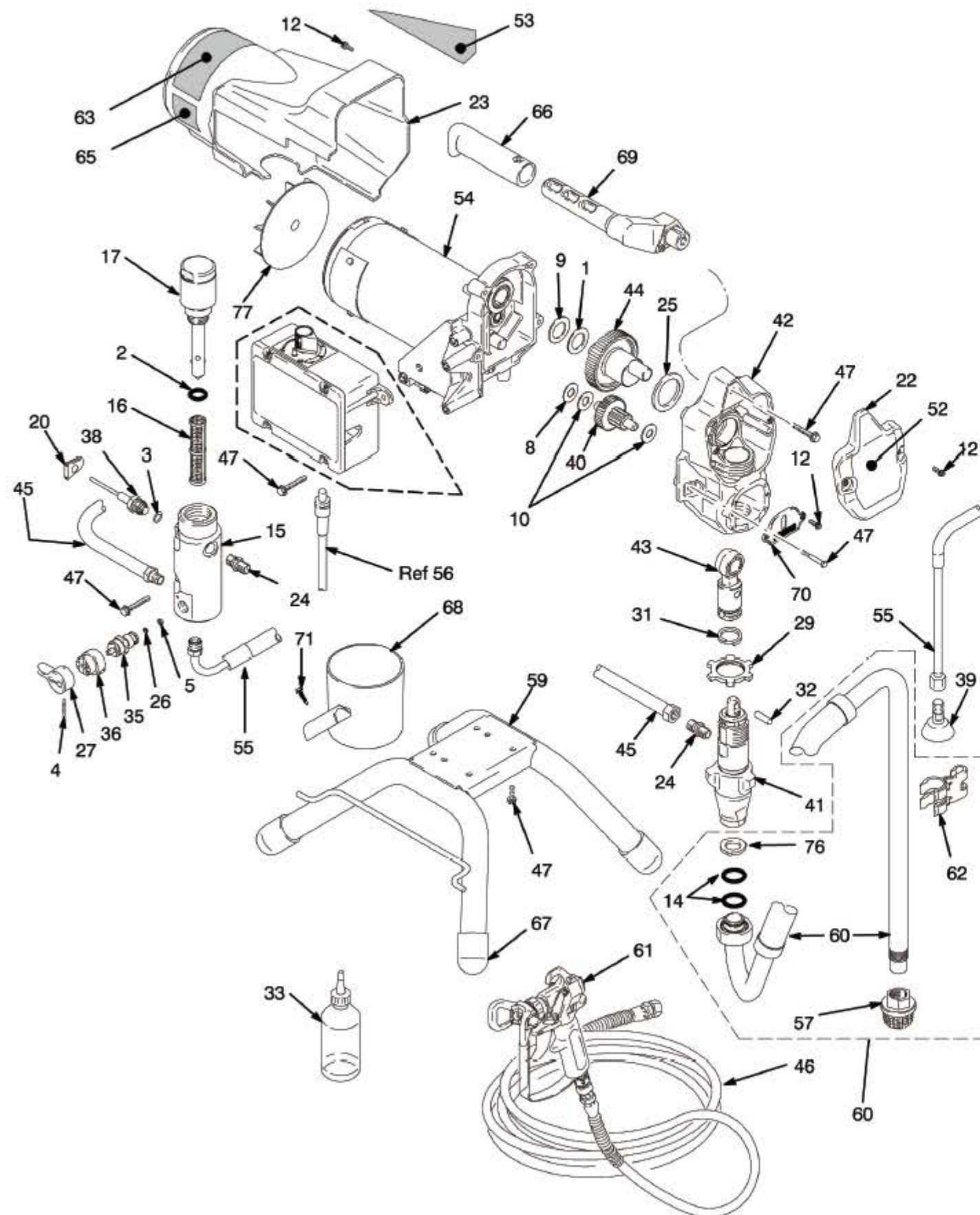
15、 With a soak in water or mineral spirits rags Wipe sprayer, hose and gun.



SPRAYER - PARTS LIST 1

No.	Product name	Quantity	No.	Product name	Quantity
1	Bearings, thrust	1	45	Hose	1
2	O-ring	1	46	High pressure hose	1
3	O-ring	1	47	SHCS	11
4	Pin	1	52	Front label	1
5	Gaskets, valve seats, valve	1	53	Side tag	1
8	Spacer ring	1	54	220V motors	1
9	Spacer ring	1	55	Return pipe	1
10	Bearings, thrust	2	57	Filter	1
12	SHCS	6	59	Chassis	1
14	O-ring	2	60	Suction hose	1
15	Aluminum filter rod	1	61	Lance,	1
16	Liquid filters, 60 mesh	1	62	Drain clamp	1
17	Rod Cover	1	66	Handle	1
20	Transducer	1	67	Pouches	4
22	The front cover	1	68	Suction / discharge Cup	1
23	Motor protection cover	1	69	Handle	1
24	On the wire	2	70	Blanks	1
25	Bearings, thrust	1	71	SHCS	1
26	Seat valve	1	76	Spacer ring	1
27	Valve wrench	1	77	Fan	1
29	Flower-nuts	1			
31	Fixed spring	1			
32	Pin	1			
33	Lecythus	1			
35	Return valve	1			
36	Base valve	1			
38	Pressure Sensor	1			
39	Thread deflector	1			
40	Gear reducer	1			
41	Takeover	1			
42	Drive housing	1			
43	Connecting rod	1			
44	Gear, crankshaft	1			

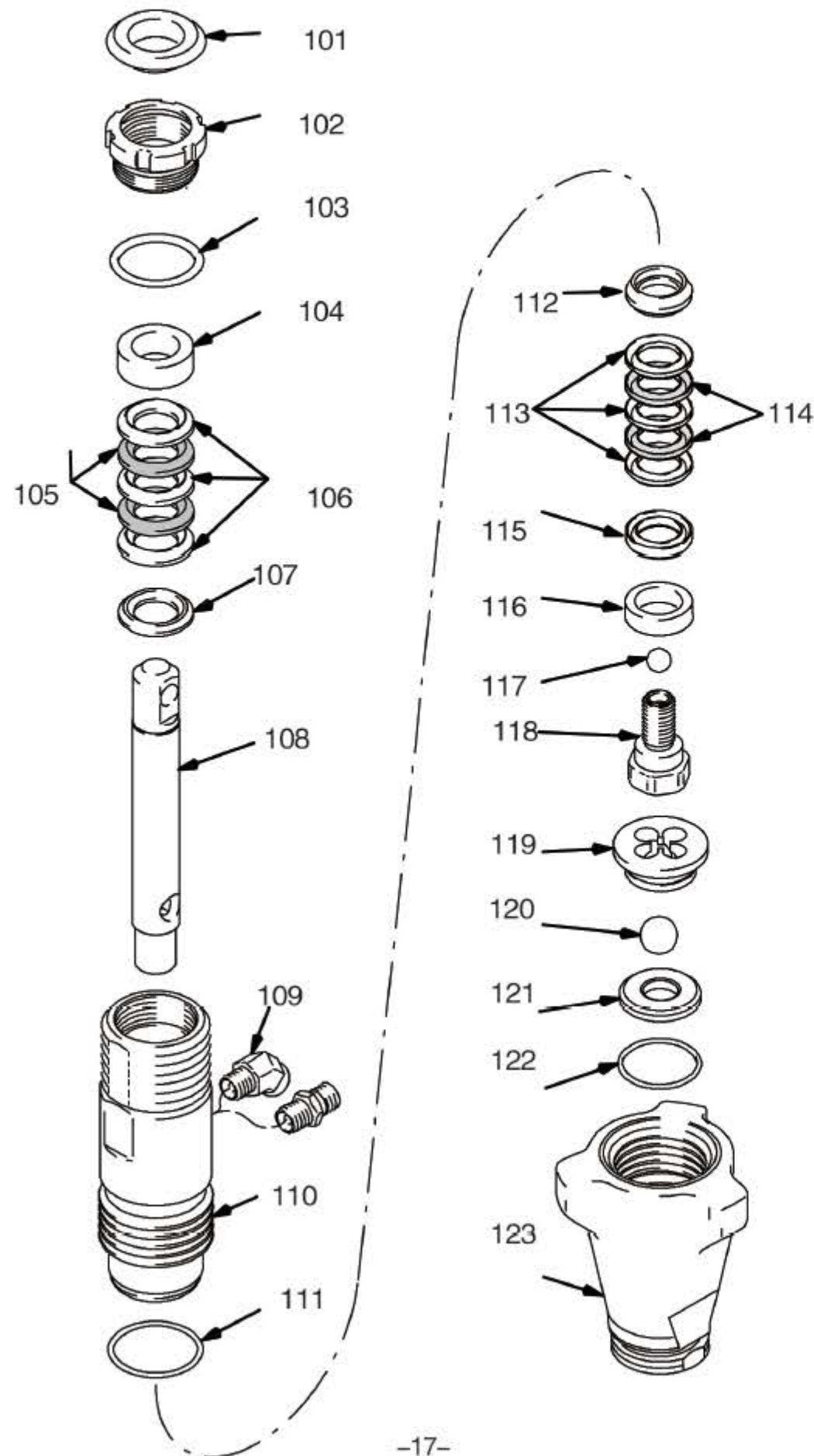
SPRAYER - PART 1



Troubleshooting

problem	The reason	Solve
A.Sprayer not start	<ol style="list-style-type: none"> 1. The sprayer is not powered 2. Brush has come to life 3. When the case is still in with a pressure sprayer is switched off 4. undervoltage 5. The extension cord is damaged or the power is too low 6. Spray the cabinet flow protection operation 7. The motor has a problem 	<ol style="list-style-type: none"> 1. power 2. Replace brushes 3. The pressure is adjusted to the highest position or return valve rotation to the return site 4. Test the power supply voltage, to ensure a stable voltage 5. Replace the drag strip 6. Please reset the protector after troubleshooting 7. Take the device to the agency maintenance
B.Spray function starts, when the switch is set to reflux reflux can not blowdown	<ol style="list-style-type: none"> 1. Unable to reflux 2. The paint bucket is empty or the suction tube Not completely immersed in the paint 3. The suction tube blockage The suction tube and suction valve junction unsealed 5. The inlet valve or outlet valve stuck 6. The intake valve wear or damage 7. return valve blockage 	<ol style="list-style-type: none"> 1. Try to look again at reflux. 2. Load the paint bucket or suction tube is fully immersed in the paint 3. Clean the suction tube 4. Clean the pipe connections, and the solid 5. Clean the inlet, outlet valve or replace worn parts 6. Replace the intake valve 7. Take the device to the agency maintenance.
C.The rapid decline in spraying lance opening pressure	<ol style="list-style-type: none"> 1. nozzle wear serious 2. Suction filter clogging 3. Paint or paint too viscous The discharge valve is not clean or wear 5. The intake valve is damaged or worn 	<ol style="list-style-type: none"> 1. Replace the nozzle 2. Clean intake filter 3. The diluted paint or coating 4. Clean or replace the outlet valve 5. Replace the intake valve
D.When the switch is refluxed for spraying liquid from the return conduit flows.	<ol style="list-style-type: none"> 1.Reflux valve is not clean or wear 	<ol style="list-style-type: none"> 1. Take the device to the agent for repair or renewal return valve
E.Spray leak	<ol style="list-style-type: none"> 1.Gun internal parts are not clean or wear 	<ol style="list-style-type: none"> 1. Take the device to the agency maintenance
F.Nozzle seat leakage	<ol style="list-style-type: none"> 1. nozzle seat improper assembly parts 2. The seal wear 	<ol style="list-style-type: none"> 1. Check the nozzle seat is fitted properly 2. Replace the seals
G.Absolutely can not stand the pressure spray or Normal force, shot instantaneous pressure reduction Small enough traffic	<ol style="list-style-type: none"> 1. nozzle or filter is clogged 2. The cleaning nozzle in reverse position 3. clogged suction port 	<ol style="list-style-type: none"> 1. Clean the nozzles or cartridge 2. Place the nozzle in spray position 3. Clean dirty dirt
H.Paint unevenly distributed	<ol style="list-style-type: none"> 1. Set the spray pressure is too low 2. guns, nozzles, filters blocked 3. The suction tube and suction valve junction unsealed 4. nozzle wear 5. The paint is too thick 6. Pressure leak 	<ol style="list-style-type: none"> 1. Increase spray pressure 2. Clean the filter 3. Strengthening the suction tube 4. Replace the nozzle 5. diluted paint or coating 6. View Solution C
I.Sprayer lack of motivation, low pressure	<ol style="list-style-type: none"> 1. The pressure is set too low 2. The power supply voltage is low 	<ol style="list-style-type: none"> 1. Adjust the pressure control knob clockwise to increase pressure setting 2. Select high-quality power access port work

ACCESSORIES CODING



-17-

SKIN INJECTION HAZARD



From the gun, hose leaks, or ruptured components emitted by the high-pressure fluid can pierce the skin. Injuries look like "just a cut mouth, "it is a serious injury that can result in amputation. Get immediate surgical treatment.

- Do not point the gun at anyone or any part of the body.
- Do not put your hand over the nozzle.
- Do not hand, body, glove or rag stop or deflect leaks.
- Engage trigger lock when not spraying.
- When you stop spraying and before cleaning, checking, or servicing equipment, follow the Pressure Relief Procedure in this manual.



Dangerous high-voltage aluminum parts

Do not use 1,1,1-trichloroethane, methylene chloride in pressurized aluminum equipment, and other halogenated hydrocarbon solvents or contain Fluid these solvents. Doing so can cause serious chemical reaction and equipment rupture, and result in serious personal injury or death And property damage.



Fluid or smoke poisoning hazard

If the inhalation of toxic fumes, ingestion of toxic fluid or splashed in the eyes or on the skin can cause serious Injury or death.

- Read Material Safety Data Sheet (MSDS), familiar with the specific hazards of the fluids.
- Hazardous fluid stored in approved containers, and dispose of in accordance with the requirements of the relevant provisions.



Personal Protective Equipment

When operating or servicing equipment, or when in the operating area of the equipment, and must wear appropriate protective equipment to protect against Serious injuries (including eye injury), inhalation of toxic fumes, burns, and hearing loss. These items include, but are not

Limited to:

- Goggles
- Fluid and solvent manufacturer recommended protective clothing and a respirator
- Gloves
- Hearing protection

- 2 -